

\$159,900 - 11406 88 Street, Edmonton

MLS® #E4429605

\$159,900

0 Bedroom, 0.00 Bathroom,
Single Family on 0.00 Acres

Parkdale (Edmonton), Edmonton, AB

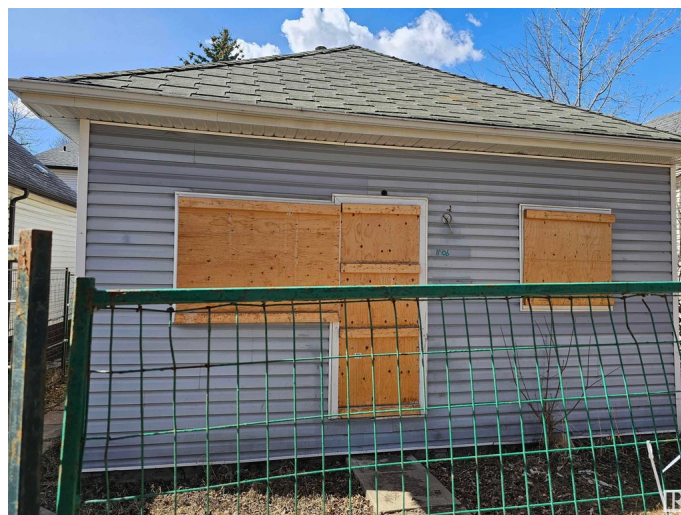
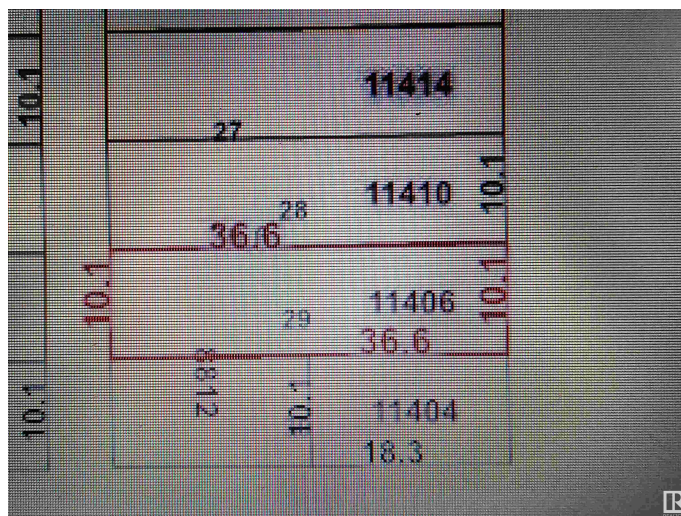
Invest, infill, or restore the existing home!
Perfect to build a front back duplex on this
RF-3, 33 x 120 lot, house is of no value and
no entry available. Property is being sold "as is
where is on possession day". No Warranties or
representations.* Excellent neighborhood with
plenty of potential. Fantastic redevelopment
opportunity in the heart of up and coming
Alberta Avenue! This lot is situated near a park
and is minutes away from Kingsway, N.A.I.T.,
Grant MacEwan University, Downtown
Edmonton and the Yellowhead Trail. Build
your new home in this mature, central,
convenient and quiet tree lined neighborhood!

Essential Information

MLS® #	E4429605
Price	\$159,900
Bathrooms	0.00
Acres	0.00
Type	Single Family
Sub-Type	Vacant Lot/Land
Status	Active

Community Information

Address	11406 88 Street
Area	Edmonton
Subdivision	Parkdale (Edmonton)



City	Edmonton
County	ALBERTA
Province	AB
Postal Code	T5B 3R1

Exterior

Exterior Features Back Lane, Playground Nearby, Public Transportation, Schools, Shopping Nearby

Additional Information

Date Listed	April 8th, 2025
Days on Market	89
Zoning	Zone 05

DATA IS DEEMED RELIABLE BUT IS NOT GUARANTEED ACCURATE BY THE REALTORS® ASSOCIATION OF EDMONTON. COPYRIGHT 2025 BY THE REALTORS® ASSOCIATION OF EDMONTON. ALL RIGHTS RESERVED. Trademarks are owned or controlled by the Canadian Real Estate Association (CREA) and identify real estate professionals who are members of CREA (REALTOR®, REALTORS®) and/or the quality of services they provide (MLS®, Multiple Listing Service®)

Listing information last updated on July 6th, 2025 at 12:32pm MDT