

Courtesy Of Yad Dhillon Of Nationwide Realty Corp

\$559,900 - 1914 155 Avenue, Edmonton

MLS® #E4430197

\$559,900

3 Bedroom, 3.00 Bathroom, 1,742 sqft

Single Family on 0.00 Acres

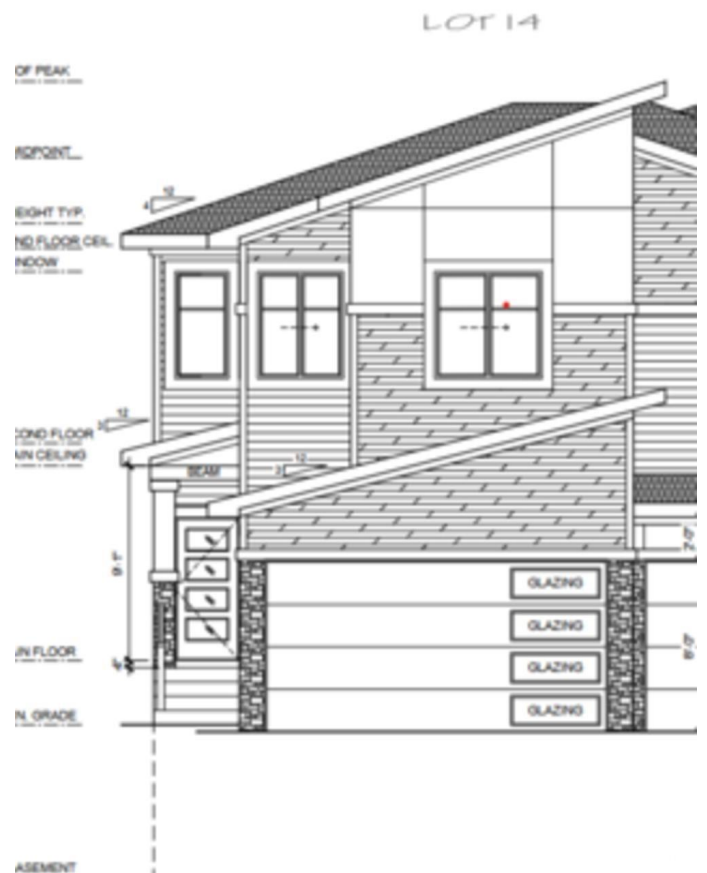
Gorman, Edmonton, AB

****MAIN FLOOR DEN**SPICE KITCHEN + MAIN KITCHEN + **Welcome to this stunning half duplex in the heart of Gorman, North Edmonton! this home offers endless possibilities. The main floor boasts a bright and airy open-to-below concept, a spacious living room, a dining area, and a convenient side entry to the basement. You'll also find a versatile den with a 3-piece ensuite bathroom and a practical spice kitchen for all your culinary adventures. Upstairs, relax in the serene primary suite featuring a luxurious 5-piece ensuite and walk-in closet.two additional bedrooms, a stylish 3-piece bathroom, and a laundry room complete this level. SIDE ENTRY TO THE BASEMENT and basement waiting for your personal touch**House under Construction**approx ready within 1-2 months****

Built in 2025

Essential Information

MLS® #	E4430197
Price	\$559,900
Bedrooms	3
Bathrooms	3.00
Full Baths	3
Square Footage	1,742
Acres	0.00



Year Built	2025
Type	Single Family
Sub-Type	Half Duplex
Style	2 Storey
Status	Active

Community Information

Address	1914 155 Avenue
Area	Edmonton
Subdivision	Gorman
City	Edmonton
County	ALBERTA
Province	AB
Postal Code	T5Y 4H8

Amenities

Amenities	Carbon Monoxide Detectors, Detectors Smoke
Parking	Double Garage Attached

Interior

Interior Features	ensuite bathroom
Appliances	See Remarks
Heating	Forced Air-1, Natural Gas
Fireplace	Yes
Fireplaces	None
Stories	3
Has Basement	Yes
Basement	Full, Unfinished

Exterior

Exterior	Wood, Stone, Vinyl
Exterior Features	Commercial, Golf Nearby, Public Transportation, Schools, Shopping Nearby, View City
Roof	Asphalt Shingles
Construction	Wood, Stone, Vinyl
Foundation	Concrete Perimeter

Additional Information

Date Listed	April 10th, 2025
-------------	------------------

Days on Market 83

Zoning Zone 03

DATA IS DEEMED RELIABLE BUT IS NOT GUARANTEED ACCURATE BY THE REALTORS® ASSOCIATION OF EDMONTON. COPYRIGHT 2025 BY THE REALTORS® ASSOCIATION OF EDMONTON. ALL RIGHTS RESERVED. Trademarks are owned or controlled by the Canadian Real Estate Association (CREA) and identify real estate professionals who are members of CREA (REALTOR®, REALTORS®) and/or the quality of services they provide (MLS®, Multiple Listing Service®)

Listing information last updated on July 2nd, 2025 at 5:17am MDT