

Courtesy Of Dragic Janjic Of RE/MAX River City

\$323,888 - 1104 10152 104 Street, Edmonton

MLS® #E4431205

\$323,888

2 Bedroom, 2.00 Bathroom, 852 sqft

Condo / Townhouse on 0.00 Acres

Downtown (Edmonton), Edmonton, AB

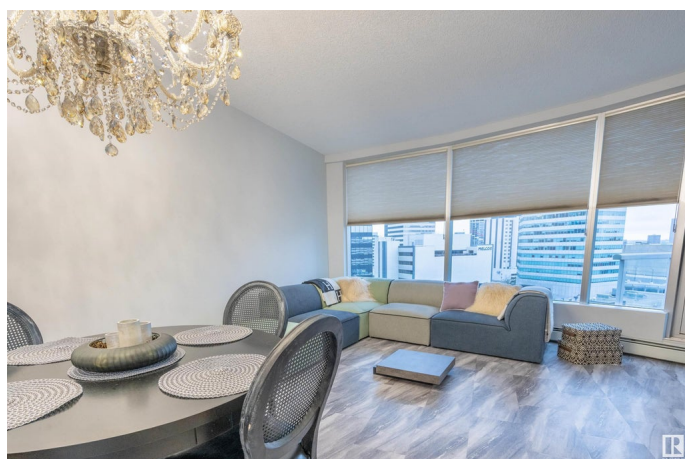
Envision the endless possibilities that await! Located in one of the most exquisite areas of the city, Icon 2 presents an exceptional opportunity to seamlessly integrate work, living, and social life into a single, extraordinary space. Step into this remarkable, fully renovated two-bedroom condo with southern exposure and revel in over 850 square feet of thoughtfully designed living space. This impeccable residence boasts numerous enhancements, including an in-suite laundry, a custom sliding barn-door concealing a built-in TV, showcasing the art of maximizing living areas. Modern accents adorn every corner, from the striking vinyl floor to the sleek kitchen complemented by a captivating feature wall adorned with stylish wallpaper. The master bedroom showcases a generously sized walk-in closet and a luxurious four-piece bathroom. Complete with a south-facing balcony boasting unparalleled city views, this unit stands as an epitome of sophistication and is unequivocally one of the finest in its class.

Built in 2009

Essential Information

MLS® # E4431205

Price \$323,888



Bedrooms	2
Bathrooms	2.00
Full Baths	2
Square Footage	852
Acres	0.00
Year Built	2009
Type	Condo / Townhouse
Sub-Type	Apartment High Rise
Style	Single Level Apartment
Status	Active

Community Information

Address	1104 10152 104 Street
Area	Edmonton
Subdivision	Downtown (Edmonton)
City	Edmonton
County	ALBERTA
Province	AB
Postal Code	T6J 1A7

Amenities

Amenities	Intercom, Parking-Visitor, Secured Parking, See Remarks
Parking	Heated, Underground

Interior

Appliances	Dishwasher-Built-In, Dryer, Refrigerator, Stove-Electric, Washer
Heating	Baseboard, Natural Gas
# of Stories	35
Stories	1
Has Basement	Yes
Basement	None, No Basement

Exterior

Exterior	Concrete, Brick, Stone, Stucco
Exterior Features	Public Transportation, Schools, Shopping Nearby, View Downtown, See Remarks
Roof	EPDM Membrane
Construction	Concrete, Brick, Stone, Stucco
Foundation	Concrete Perimeter

Additional Information

Date Listed	April 16th, 2025
Days on Market	78
Zoning	Zone 12
Condo Fee	\$713

DATA IS DEEMED RELIABLE BUT IS NOT GUARANTEED ACCURATE BY THE REALTORS® ASSOCIATION OF EDMONTON. COPYRIGHT 2025 BY THE REALTORS® ASSOCIATION OF EDMONTON. ALL RIGHTS RESERVED.Trademarks are owned or controlled by the Canadian Real Estate Association (CREA) and identify real estate professionals who are members of CREA (REALTOR®, REALTORS®) and/or the quality of services they provide (MLS®, Multiple Listing Service®)

Listing information last updated on July 2nd, 2025 at 9:33pm MDT