

\$274,800 - 457 11517 Ellerslie Road, Edmonton

MLS® #E4435952

\$274,800

2 Bedroom, 2.00 Bathroom, 1,019 sqft

Condo / Townhouse on 0.00 Acres

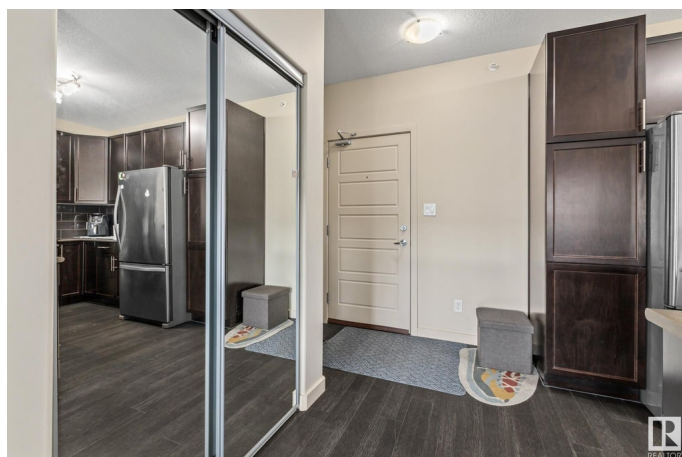
Rutherford (Edmonton), Edmonton, AB

Welcome to this bright & spacious top-floor, south-facing condo in the heart of Rutherford! Offering 2 beds & 2 full baths, this meticulously maintained unit features an amazing open-concept layout w/ a stylish kitchen, stainless steel appliances & raised eating barâ€”perfect for casual dining or entertaining. The primary suite includes a walk-through closet & private ensuite. The secondary room is massive with space for a king size bed and desk. You'll also appreciate the in-suite laundry w/ extra storage and the second full 4 pc bath. This home includes 2 titled parking stallsâ€”1 underground (w/ storage locker) & 1 surface stall. Enjoy the extra amenities this building offers, including a fully equipped gym, games room w/ pool table & wet bar, & a guest suite for visitors. Located just steps from the Heritage Valley Park & Ride, future home of the LRT Capital Line South extension, this is a great opportunity for homeowners or investors. Condo fees incl. heat & water.

Built in 2011

Essential Information

MLS® #	E4435952
Price	\$274,800
Bedrooms	2
Bathrooms	2.00



Full Baths	2
Square Footage	1,019
Acres	0.00
Year Built	2011
Type	Condo / Townhouse
Sub-Type	Lowrise Apartment
Style	Single Level Apartment
Status	Active

Community Information

Address	457 11517 Ellerslie Road
Area	Edmonton
Subdivision	Rutherford (Edmonton)
City	Edmonton
County	ALBERTA
Province	AB
Postal Code	T6W 2A9

Amenities

Amenities	Ceiling 9 ft., Deck, Parking-Visitor, Recreation Room/Centre, Social Rooms, Storage-Locker Room
Parking	Heated, Stall, Underground

Interior

Interior Features	ensuite bathroom
Appliances	Dishwasher-Built-In, Microwave Hood Fan, Refrigerator, Stacked Washer/Dryer, Stove-Electric
Heating	Hot Water, Natural Gas
# of Stories	4
Stories	1
Has Basement	Yes
Basement	None, No Basement

Exterior

Exterior	Wood, Stone, Vinyl
Exterior Features	Airport Nearby, Landscaped, Park/Reserve, Playground Nearby, Public Transportation, Schools, Shopping Nearby
Roof	Asphalt Shingles
Construction	Wood, Stone, Vinyl

Foundation Concrete Perimeter

School Information

Elementary Johnny Bright
Middle Johnny Bright
High Dr. Anne Anderson

Additional Information

Date Listed May 12th, 2025
Days on Market 51
Zoning Zone 55
Condo Fee \$627

DATA IS DEEMED RELIABLE BUT IS NOT GUARANTEED ACCURATE BY THE REALTORS® ASSOCIATION OF EDMONTON. COPYRIGHT 2025 BY THE REALTORS® ASSOCIATION OF EDMONTON. ALL RIGHTS RESERVED.Trademarks are owned or controlled by the Canadian Real Estate Association (CREA) and identify real estate professionals who are members of CREA (REALTOR®, REALTORS®) and/or the quality of services they provide (MLS®, Multiple Listing Service®)
Listing information last updated on July 2nd, 2025 at 7:17am MDT