

# \$739,000 - 140 28 Street, Edmonton

MLS® #E4436194

**\$739,000**

6 Bedroom, 5.00 Bathroom, 2,110 sqft  
Single Family on 0.00 Acres

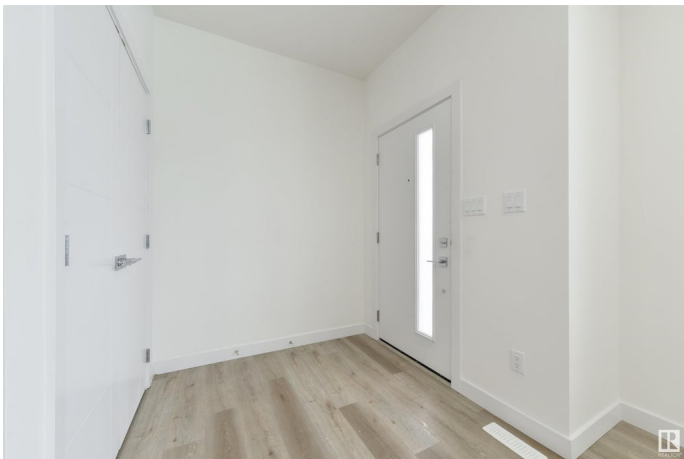
Alces, Edmonton, AB

Welcome to Alces! This stunning modern 3-unit dwelling perfect for homeowners, investors, or multi-generational living. The main residence features 3 bedrooms, a den, and 3 full bathrooms, Den and full bathroom on the main floor. An open-concept layout, high-end finishes, and a spacious master suite. The LEGAL BASEMENT features 2-bedroom, 1-bath basement suite has a separate entrance, full kitchen, and in-suite laundry, while the 1-bedroom, 1-bath GARDEN SUITE offers a private, self-contained living space with a full kitchen and separate laundry. Additional highlights include a detached garage, energy-efficient appliances, and a prime location near schools, shopping, and transit. All appliances included! Donâ€™t miss out on this turnkey opportunity!

Built in 2025

## Essential Information

MLS® #	E4436194
Price	\$739,000
Bedrooms	6
Bathrooms	5.00
Full Baths	5
Square Footage	2,110
Acres	0.00
Year Built	2025



Type	Single Family
Sub-Type	Detached Single Family
Style	2 Storey
Status	Active

### Community Information

Address	140 28 Street
Area	Edmonton
Subdivision	Alces
City	Edmonton
County	ALBERTA
Province	AB
Postal Code	T6E 6N1

### Amenities

Amenities	Off Street Parking, On Street Parking, No Smoking Home
Parking Spaces	4
Parking	Double Garage Detached

### Interior

Interior Features	ensuite bathroom
Appliances	Dishwasher-Built-In, Oven-Built-In, Refrigerator, Stacked Washer/Dryer, Dryer-Two, Refrigerators-Two, Washers-Two, Microwave Hood Fan-Two, Oven Built-In-Two
Heating	Forced Air-1, Natural Gas
Stories	3
Has Suite	Yes
Has Basement	Yes
Basement	Full, Finished

### Exterior

Exterior	Wood, Vinyl
Exterior Features	Playground Nearby, Schools, Shopping Nearby
Roof	Asphalt Shingles
Construction	Wood, Vinyl
Foundation	Slab

### Additional Information

Date Listed	May 13th, 2025
-------------	----------------

Days on Market 65

Zoning Zone 53

DATA IS DEEMED RELIABLE BUT IS NOT GUARANTEED ACCURATE BY THE REALTORS® ASSOCIATION OF EDMONTON. COPYRIGHT 2025 BY THE REALTORS® ASSOCIATION OF EDMONTON. ALL RIGHTS RESERVED. Trademarks are owned or controlled by the Canadian Real Estate Association (CREA) and identify real estate professionals who are members of CREA (REALTOR®, REALTORS®) and/or the quality of services they provide (MLS®, Multiple Listing Service®)

Listing information last updated on July 17th, 2025 at 8:17am MDT