

## \$429,900 - 260 Southwick Way, Leduc

MLS® #E4436877

**\$429,900**

3 Bedroom, 2.50 Bathroom, 1,479 sqft

Single Family on 0.00 Acres

Southfork, Leduc, AB

BRAND NEW SHINGLES! LUXURY VINYL FLOORING! DOUBLE DETACHED GARAGE! TONS OF NATURAL LIGHT! NEXT TO A PLAYGROUND! This 1479 sq ft 3 bed, 2.5 bath open concept gem in Southfork is tastefully updated; ample space for your growing family on a budget. WINDOWS GALORE throughout the main floor, with large dining & living space, gas fireplace, and generous kitchen w/island and pantry; newer stove! Luxury flooring all installed professionally. Upstairs brings a HUGE master bedroom w/ 4 pce ensuite & w-in closet. PLENTY of space for your KING BED! Two more good-sized bedrooms for kids, office space, linen closet, and 4 pce bath. Newer double detached garage, patio pavers, sod; fenced & ready to enjoy your favourite wine with friends this summer! The basement is a large footprint for future 4th bed, rec room, and 4 pce bath. Steps away from a playground and walking to distance to Father Leduc School, location is superb. Call Southfork home today!

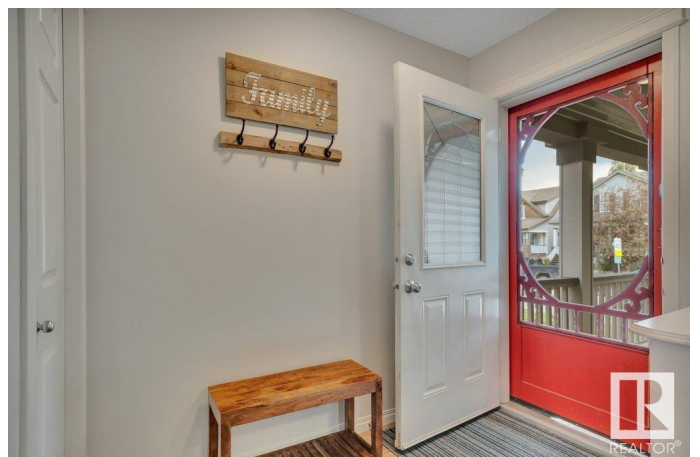
Built in 2006

### Essential Information

MLS® # E4436877

Price \$429,900

Bedrooms 3



Bathrooms	2.50
Full Baths	2
Half Baths	1
Square Footage	1,479
Acres	0.00
Year Built	2006
Type	Single Family
Sub-Type	Detached Single Family
Style	2 Storey
Status	Active

### **Community Information**

Address	260 Southwick Way
Area	Leduc
Subdivision	Southfork
City	Leduc
County	ALBERTA
Province	AB
Postal Code	T9E 0E7

### **Amenities**

Amenities	On Street Parking, Deck, Hot Water Natural Gas, Vinyl Windows
Parking	Double Garage Detached

### **Interior**

Interior Features	ensuite bathroom
Appliances	Dryer, Garage Control, Garage Opener, Oven-Microwave, Refrigerator, Stove-Electric, Washer, Window Coverings
Heating	Forced Air-1, Natural Gas
Fireplace	Yes
Fireplaces	Insert
Stories	2
Has Basement	Yes
Basement	Full, Unfinished

### **Exterior**

Exterior	Wood, Vinyl
Exterior Features	Airport Nearby, Back Lane, Fenced, Landscaped, Schools, Shopping Nearby

Roof	Asphalt Shingles
Construction	Wood, Vinyl
Foundation	Concrete Perimeter

### **School Information**

Elementary	Father Leduc
Middle	Father Leduc
High	Leduc Composite High Schoo

### **Additional Information**

Date Listed	May 16th, 2025
Days on Market	49
Zoning	Zone 81

DATA IS DEEMED RELIABLE BUT IS NOT GUARANTEED ACCURATE BY THE REALTORS® ASSOCIATION OF EDMONTON. COPYRIGHT 2025 BY THE REALTORS® ASSOCIATION OF EDMONTON. ALL RIGHTS RESERVED. Trademarks are owned or controlled by the Canadian Real Estate Association (CREA) and identify real estate professionals who are members of CREA (REALTOR®, REALTORS®) and/or the quality of services they provide (MLS®, Multiple Listing Service®)

Listing information last updated on July 4th, 2025 at 8:17am MDT