

# \$354,998 - 100 3705 141 Street, Edmonton

MLS® #E4440005

**\$354,998**

3 Bedroom, 2.50 Bathroom, 1,099 sqft  
Condo / Townhouse on 0.00 Acres

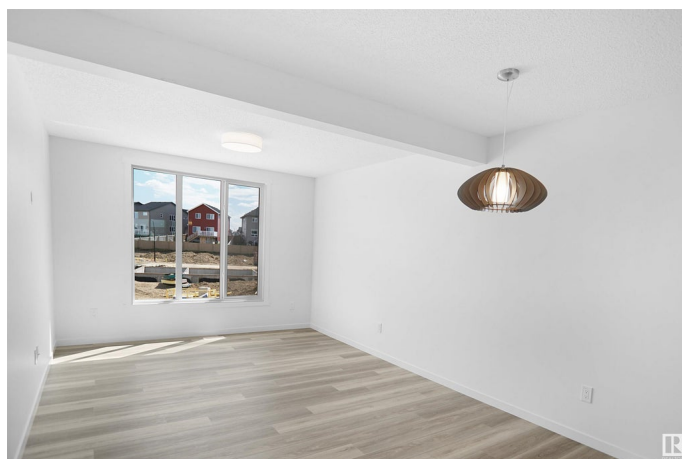
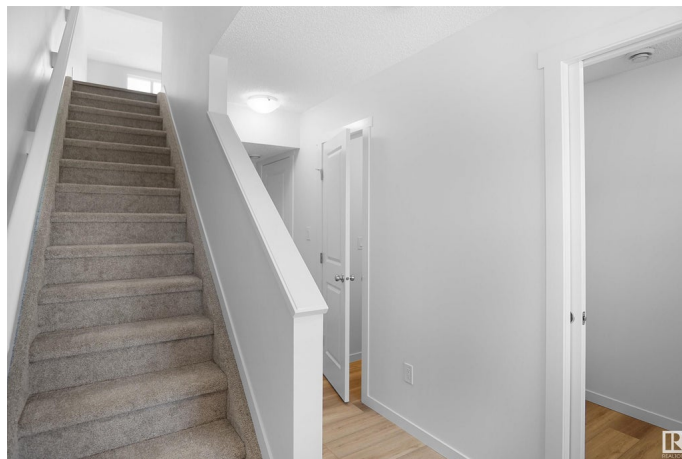
Desrochers Area, Edmonton, AB

This is StreetSide Developments the "Abbey" model. This innovative home design with the ground level featuring a single oversized attached garage that leads to the front entrance and a main floor den or bedroom. It features a large kitchen. The cabinets are modern and there is a full back splash & quartz counter tops. It is open to the living room and the living room features lots of windows that makes it super bright. The deck has a vinyl surface & glass with aluminum railing that is off the kitchen. This home features 2 Primary bedrooms with 2 full bathrooms. The flooring is luxury vinyl plank & carpet. Maintenance fees are \$60/month. It is professionally landscaped. Visitor parking on site.\*\*\*Home is under construction and the photos are of a previously built unit same layout but the colors and finishing's may vary, to be completed by December 2025 \*\*\*

Built in 2025

## Essential Information

|            |           |
|------------|-----------|
| MLS® #     | E4440005  |
| Price      | \$354,998 |
| Bedrooms   | 3         |
| Bathrooms  | 2.50      |
| Full Baths | 2         |
| Half Baths | 1         |



|                |                   |
|----------------|-------------------|
| Square Footage | 1,099             |
| Acres          | 0.00              |
| Year Built     | 2025              |
| Type           | Condo / Townhouse |
| Sub-Type       | Townhouse         |
| Style          | 2 Storey          |
| Status         | Active            |

### **Community Information**

|             |                     |
|-------------|---------------------|
| Address     | 100 3705 141 Street |
| Area        | Edmonton            |
| Subdivision | Desrochers Area     |
| City        | Edmonton            |
| County      | ALBERTA             |
| Province    | AB                  |
| Postal Code | T6W 3J2             |

### **Amenities**

|           |                        |
|-----------|------------------------|
| Amenities | See Remarks            |
| Parking   | Single Garage Attached |

### **Interior**

|                   |                           |
|-------------------|---------------------------|
| Interior Features | ensuite bathroom          |
| Appliances        | See Remarks               |
| Heating           | Forced Air-1, Natural Gas |
| Stories           | 3                         |
| Has Basement      | Yes                       |
| Basement          | None, No Basement         |

### **Exterior**

|                   |  |
|-------------------|--|
| Exterior          | Wood, Vinyl  |
| Exterior Features | Fenced, Golf Nearby, Landscaped, Park/Reserve, Playground Nearby, Public Transportation, Schools, Shopping Nearby, See Remarks |
| Roof              | Asphalt Shingles   |
| Construction      | Wood, Vinyl  |
| Foundation        | Concrete Perimeter   |

### **Additional Information**

|             |                |
|-------------|----------------|
| Date Listed | June 2nd, 2025 |
|-------------|----------------|

|                |         |
|----------------|---------|
| Days on Market | 30      |
| Zoning         | Zone 55 |
| Condo Fee      | \$89    |

DATA IS DEEMED RELIABLE BUT IS NOT GUARANTEED ACCURATE BY THE REALTORS® ASSOCIATION OF EDMONTON. COPYRIGHT 2025 BY THE REALTORS® ASSOCIATION OF EDMONTON. ALL RIGHTS RESERVED. Trademarks are owned or controlled by the Canadian Real Estate Association (CREA) and identify real estate professionals who are members of CREA (REALTOR®, REALTORS®) and/or the quality of services they provide (MLS®, Multiple Listing Service®)

Listing information last updated on July 2nd, 2025 at 8:17am MDT