

\$188,000 - 402 11020 19 Avenue, Edmonton

MLS® #E4440066

\$188,000

2 Bedroom, 2.00 Bathroom, 1,130 sqft

Condo / Townhouse on 0.00 Acres

Keheewin, Edmonton, AB

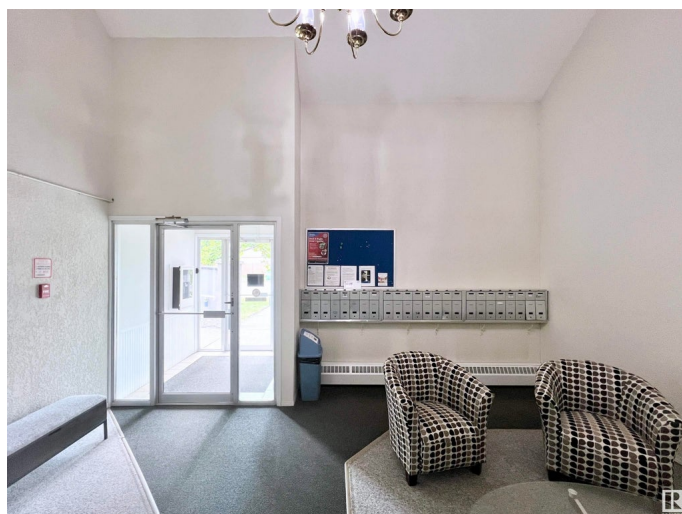
Welcome to Kaskitayo Place in Keheewin!

This spacious 1,130 sqft, 2-bedrm, 2-bathrm on top-floor condo with private patio is situated in a well-maintained, professionally managed 18+ adult building. â€¢ Bright & inviting living room with a cozy corner wood-burning fireplace. â€¢ Functional kitchen - abundant cabinetry and ample counter space. â€¢ Spacious dining area - adjacent to the kitchen â€¢ Generous primary bedroom - featuring a 4-piece ensuite and double closets â€¢ West-facing balcony â€” perfect for relaxing sunsets â€¢ In-suite laundry - large storage room, and **additional storage locker on main floor â€¢ 1 assigned parking carport â€¢ Prime Location - Steps away from schools, parks, YMCA, 7-11, Century Park LRT, and scenic Blackmud Creek Ravine â€¢ Easy access to walking trails, and the Anthony Henday for quick commutes. â€¢ Surrounded by greenery yet close to all amenities â€” your perfect balance of nature and city living!

Built in 1989

Essential Information

MLS® #	E4440066
Price	\$188,000
Bedrooms	2
Bathrooms	2.00



Full Baths	2
Square Footage	1,130
Acres	0.00
Year Built	1989
Type	Condo / Townhouse
Sub-Type	Lowrise Apartment
Style	Single Level Apartment
Status	Active

Community Information

Address	402 11020 19 Avenue
Area	Edmonton
Subdivision	Keheewin
City	Edmonton
County	ALBERTA
Province	AB
Postal Code	T6J 9P5

Amenities

Amenities	Patio, Tennis Courts, Storage Cage, Rooftop Deck/Patio
Parking Spaces	1
Parking	Single Carport

Interior

Interior Features	ensuite bathroom
Appliances	Dishwasher-Built-In, Dryer, Hood Fan, Refrigerator, Stove-Electric, Washer, Window Coverings
Heating	Baseboard, Hot Water, Natural Gas
# of Stories	4
Stories	1
Has Basement	Yes
Basement	None, No Basement

Exterior

Exterior	Wood, Stucco
Exterior Features	Backs Onto Park/Trees, Flat Site, Golf Nearby, Playground Nearby, Public Swimming Pool, Public Transportation, Schools, Shopping Nearby, See Remarks
Roof	Asphalt Shingles

Construction	Wood, Stucco
Foundation	Concrete Perimeter

Additional Information

Date Listed	June 3rd, 2025
Days on Market	44
Zoning	Zone 16
Condo Fee	\$631

DATA IS DEEMED RELIABLE BUT IS NOT GUARANTEED ACCURATE BY THE REALTORS® ASSOCIATION OF EDMONTON. COPYRIGHT 2025 BY THE REALTORS® ASSOCIATION OF EDMONTON. ALL RIGHTS RESERVED.Trademarks are owned or controlled by the Canadian Real Estate Association (CREA) and identify real estate professionals who are members of CREA (REALTOR®, REALTORS®) and/or the quality of services they provide (MLS®, Multiple Listing Service®)

Listing information last updated on July 17th, 2025 at 8:17am MDT