

\$4,999,990

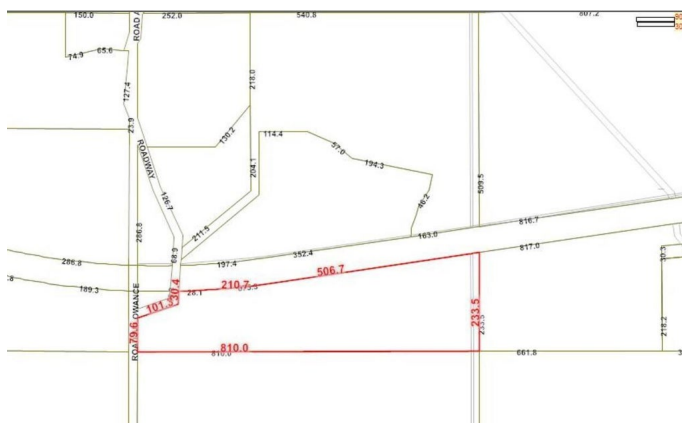
None, Rural Parkland County, AB

PRIME DEVELOPMENT OPPORTUNITY! 73 Acres of land just West of The Brickyard West Stony Plain! An exceptional opportunity to acquire a strategically located parcel of land just south of Highway 16a, ideally positioned right next to the fast-growing Suburb of Stony Plain.



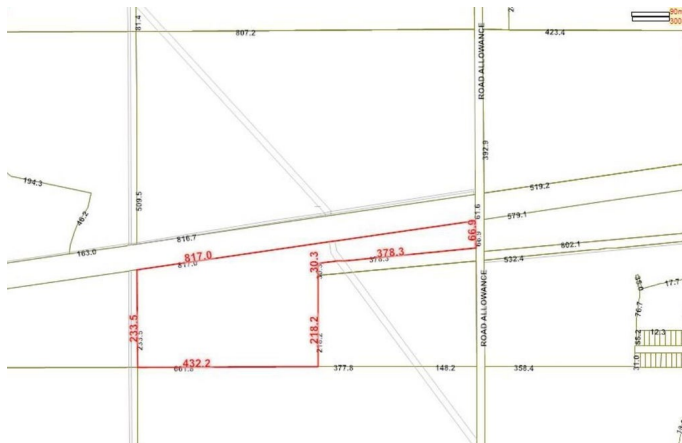
Essential Information

| | |
|-----------|-----------------|
| MLS® # | E4441582 |
| Price | \$4,999,990 |
| Bathrooms | 0.00 |
| Acres | 72.70 |
| Type | Rural |
| Sub-Type | Vacant Lot/Land |
| Status | Active |



Community Information

| | |
|-------------|-----------------------|
| Address | N/A |
| Area | Rural Parkland County |
| Subdivision | None |
| City | Rural Parkland County |
| County | ALBERTA |
| Province | AB |
| Postal Code | T7Z 0H9 |



Exterior

Exterior Features See Remarks

Additional Information

Date Listed June 10th, 2025
Days on Market 21
Zoning Zone 91

DATA IS DEEMED RELIABLE BUT IS NOT GUARANTEED ACCURATE BY THE REALTORS® ASSOCIATION OF EDMONTON. COPYRIGHT 2025 BY THE REALTORS® ASSOCIATION OF EDMONTON. ALL RIGHTS RESERVED.Trademarks are owned or controlled by the Canadian Real Estate Association (CREA) and identify real estate professionals who are members of CREA (REALTOR®, REALTORS®) and/or the quality of services they provide (MLS®, Multiple Listing Service®)
Listing information last updated on July 1st, 2025 at 5:47am MDT