

\$162,900 - 1609 10140 120 Street, Edmonton

MLS® #E4441907

\$162,900

2 Bedroom, 1.50 Bathroom, 926 sqft

Condo / Townhouse on 0.00 Acres

WÃ@hkwÃªntÃ´win, Edmonton, AB

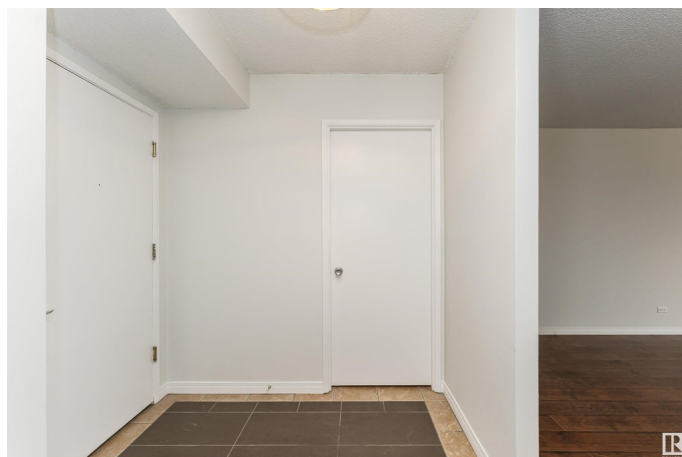
Stunning newly renovated penthouse in Glenora Manor, features 2 bedrooms and 1.5 bathrooms. This 926 sqft condo is located on the 16th floor and offers breathtaking city views. The interior boasts fresh paint, stainless steel appliances, commercial-grade lighting, upgraded hardware, ceramic tile and hardwood floor throughout. With a northeast exposure, the unit includes a massive 140 sqft private balcony, spacious bedrooms, and ample in-suite storage. For your convenience, laundry facilities are located on the same floor, and the unit is equipped with central air conditioning. Building amenities enhance the living experience with an outdoor pool, saunas, social/fitness room, secure underground parking (#73), and an on-site manager. The building is also served by 3 elevators. The condo fee covers all utilities. Recent upgrades to the building include new windows and patio doors. This exceptional location, just steps away from Jasper Ave, River Valley, 124 ST Market and Brewery District.

Built in 1969

Essential Information

MLS® # E4441907

Price \$162,900



Bedrooms	2
Bathrooms	1.50
Full Baths	1
Half Baths	1
Square Footage	926
Acres	0.00
Year Built	1969
Type	Condo / Townhouse
Sub-Type	Apartment High Rise
Style	Single Level Apartment
Status	Active

Community Information

Address	1609 10140 120 Street
Area	Edmonton
Subdivision	W&hkw&nt&win
City	Edmonton
County	ALBERTA
Province	AB
Postal Code	T5X 1Z8

Amenities

Amenities	Air Conditioner, Exercise Room, No Smoking Home, Parking-Plug-Ins, Party Room, Patio, Pool-Outdoor, Recreation Room/Centre, Sauna; Swirlpool; Steam, Secured Parking, Security Door, Social Rooms
Parking	Underground
Has Pool	Yes

Interior

Interior Features	ensuite bathroom
Appliances	Dishwasher-Built-In, Oven-Microwave, Refrigerator, Stove-Countertop Electric
Heating	Baseboard, Hot Water, Natural Gas
# of Stories	16
Stories	1
Has Basement	Yes
Basement	None, No Basement

Exterior

Exterior	Concrete, Stucco
Exterior Features	Golf Nearby, Playground Nearby, Public Swimming Pool, Public Transportation, Shopping Nearby, View City, View Downtown
Roof	Tar & Gravel
Construction	Concrete, Stucco
Foundation	Concrete Perimeter

Additional Information

Date Listed	June 12th, 2025
Days on Market	88
Zoning	Zone 12
Condo Fee	\$792

DATA IS DEEMED RELIABLE BUT IS NOT GUARANTEED ACCURATE BY THE REALTORS® ASSOCIATION OF EDMONTON. COPYRIGHT 2025 BY THE REALTORS® ASSOCIATION OF EDMONTON. ALL RIGHTS RESERVED. Trademarks are owned or controlled by the Canadian Real Estate Association (CREA) and identify real estate professionals who are members of CREA (REALTOR®, REALTORS®) and/or the quality of services they provide (MLS®, Multiple Listing Service®)

Listing information last updated on September 8th, 2025 at 10:03am MDT