

\$329,900 - 81 12815 Cumberland Road, Edmonton

MLS® #E4443279

\$329,900

2 Bedroom, 2.50 Bathroom, 1,383 sqft
Condo / Townhouse on 0.00 Acres

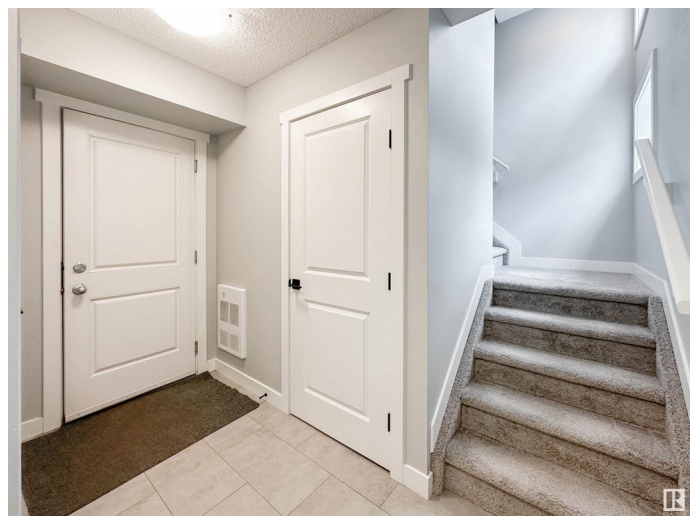
Pembina, Edmonton, AB

Discover this spacious & contemporary condo featuring two primary bedrooms, perfectly designed for comfort & convenience. Nestled in the sought after neighbourhood of Pembina, this stylish townhome offers a bright, open concept layout with large windows filtering the space with natural light. The modern kitchen is a standout, complete w/quartz countertops, SS appliances, a large island, ample counter space, and a corner pantry ideal for everyday living & entertaining. The main floor includes a welcoming living room, a dedicated dining area, and a convenient 2-pc bathroom. Upstairs, you'll find two generously sized primary bedrooms, each featuring its own private ensuite, offering privacy & comfort and a laundry closet. Additional highlights include vinyl plank flooring, a double attached garage for secure parking & extra storage, and low condo fees. Enjoy the benefits of a low maintenance lifestyle in a location that puts you close to shopping, schools, parks, & public transportation.

Built in 2019

Essential Information

MLS® #	E4443279
Price	\$329,900



Bedrooms	2
Bathrooms	2.50
Full Baths	2
Half Baths	1
Square Footage	1,383
Acres	0.00
Year Built	2019
Type	Condo / Townhouse
Sub-Type	Townhouse
Style	2 Storey
Status	Active

Community Information

Address	81 12815 Cumberland Road
Area	Edmonton
Subdivision	Pembina
City	Edmonton
County	ALBERTA
Province	AB
Postal Code	T6V 0M2

Amenities

Amenities	Deck, Exterior Walls- 2"x6", See Remarks
Parking	Double Garage Attached

Interior

Interior Features	ensuite bathroom
Appliances	Dishwasher-Built-In, Garage Control, Garage Opener, Microwave Hood Fan, Refrigerator, Stove-Electric, Window Coverings
Heating	Forced Air-1, Natural Gas
Stories	2
Has Basement	Yes
Basement	None, No Basement

Exterior

Exterior	Wood, Stone, Vinyl
Exterior Features	Low Maintenance Landscape, Playground Nearby, Public Transportation, Schools, Shopping Nearby, See Remarks
Roof	Asphalt Shingles

Construction	Wood, Stone, Vinyl
Foundation	Concrete Perimeter

Additional Information

Date Listed	June 19th, 2025
Days on Market	12
Zoning	Zone 27
Condo Fee	\$239

DATA IS DEEMED RELIABLE BUT IS NOT GUARANTEED ACCURATE BY THE REALTORS® ASSOCIATION OF EDMONTON. COPYRIGHT 2025 BY THE REALTORS® ASSOCIATION OF EDMONTON. ALL RIGHTS RESERVED.Trademarks are owned or controlled by the Canadian Real Estate Association (CREA) and identify real estate professionals who are members of CREA (REALTOR®, REALTORS®) and/or the quality of services they provide (MLS®, Multiple Listing Service®)

Listing information last updated on July 1st, 2025 at 2:32pm MDT