

## \$199,000 - 42 2505 42 Street, Edmonton

MLS® #E4443499

**\$199,000**

4 Bedroom, 2.00 Bathroom, 913 sqft

Condo / Townhouse on 0.00 Acres

Bisset, Edmonton, AB

Fantastic opportunity in Bisset. This 913sq ft bungalow features a great layout with a total of 4 bedrooms 2 bathrooms, 2 living areas, partial finished basement, and so much more. This home is in a great location, close to shopping, schools and public transportation. A gem in Bisset with great value.

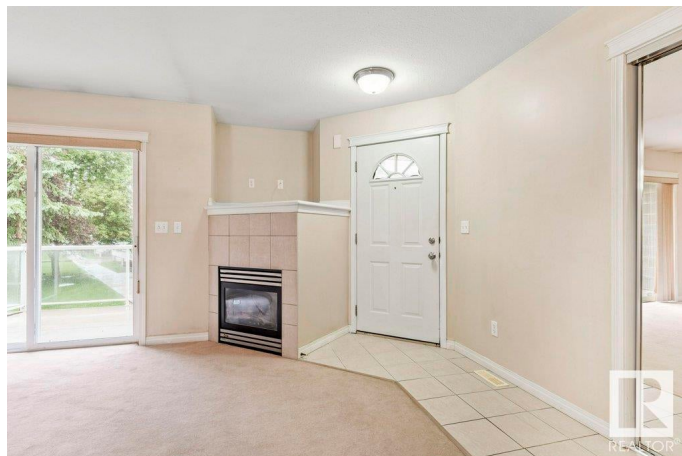
Built in 2002

### Essential Information

MLS® #	E4443499
Price	\$199,000
Bedrooms	4
Bathrooms	2.00
Full Baths	2
Square Footage	913
Acres	0.00
Year Built	2002
Type	Condo / Townhouse
Sub-Type	Townhouse
Style	Bungalow
Status	Active

### Community Information

Address	42 2505 42 Street
Area	Edmonton
Subdivision	Bisset



City	Edmonton
County	ALBERTA
Province	AB
Postal Code	T6L 7G8

### **Amenities**

Amenities	Carbon Monoxide Detectors, Deck, Front Porch, Parking-Visitor
Parking	Stall

### **Interior**

Appliances	Dryer, Microwave Hood Fan, Refrigerator, Stove-Electric, Washer
Heating	Forced Air-1, Natural Gas
Stories	2
Has Basement	Yes
Basement	Full, Partially Finished

### **Exterior**

Exterior	Wood, Vinyl
Exterior Features	Flat Site, Golf Nearby, Landscaped, Low Maintenance Landscape, Picnic Area, Playground Nearby, Public Transportation, Schools, Shopping Nearby
Roof	Asphalt Shingles
Construction	Wood, Vinyl
Foundation	Concrete Perimeter

### **Additional Information**

Date Listed	June 20th, 2025
Days on Market	11
Zoning	Zone 29
Condo Fee	\$381

DATA IS DEEMED RELIABLE BUT IS NOT GUARANTEED ACCURATE BY THE REALTORS® ASSOCIATION OF EDMONTON. COPYRIGHT 2025 BY THE REALTORS® ASSOCIATION OF EDMONTON. ALL RIGHTS RESERVED. Trademarks are owned or controlled by the Canadian Real Estate Association (CREA) and identify real estate professionals who are members of CREA (REALTOR®, REALTORS®) and/or the quality of services they provide (MLS®, Multiple Listing Service®)

Listing information last updated on July 1st, 2025 at 5:47am MDT