

## \$499,900 - 24 Napoleon Crescent, St. Albert

MLS® #E4443508

**\$499,900**

3 Bedroom, 2.50 Bathroom, 1,523 sqft

Single Family on 0.00 Acres

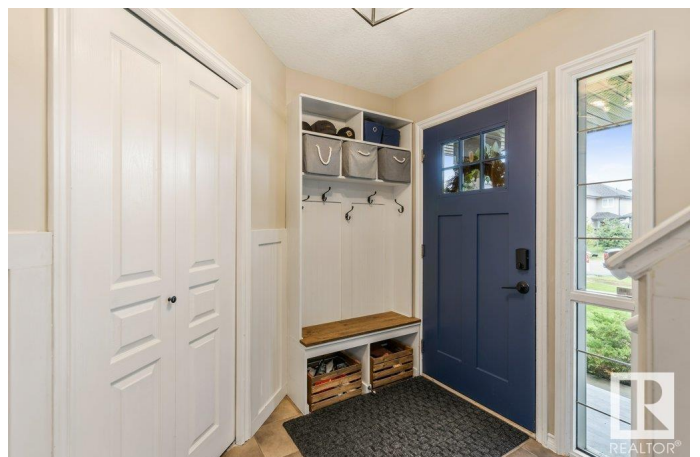
North Ridge, St. Albert, AB

The 2-storey family home in North Ridge that you've been looking for! Just steps to parks, trails & schools. This updated home offers an open-concept functional floorplan. The great room has a cozy gas fireplace and views into your southern exposure yard. The updated kitchen features a center island, quartz countertops, corner pantry, modern lighting & hardware, plus a spacious dining nook w/ access to the fully fenced, landscaped yard & interlocking stone patio. A half bath and main floor laundry completes this floor. Upstairs you'll find a main 4-pc bath and 3 generous bedrooms, including the primary suite w/ dual closets & spa-like ensuite w/ soaker tub & separate shower. The fully finished basement adds a large rec room with electric fireplace, ideal for a kidsâ€™™ zone, home gym or movie space, plus ample storage. Updates include A/C, flow-through humidifier, garage heater (2024) & roof (2025). A beautifully maintained home in a family-friendly location!

Built in 2007

### Essential Information

MLS® #	E4443508
Price	\$499,900
Bedrooms	3
Bathrooms	2.50



Full Baths	2
Half Baths	1
Square Footage	1,523
Acres	0.00
Year Built	2007
Type	Single Family
Sub-Type	Detached Single Family
Style	2 Storey
Status	Active

### **Community Information**

Address	24 Napoleon Crescent
Area	St. Albert
Subdivision	North Ridge
City	St. Albert
County	ALBERTA
Province	AB
Postal Code	T8N 1C6

### **Amenities**

Amenities	Air Conditioner, Deck, Patio, See Remarks
Parking	Double Garage Attached

### **Interior**

Interior Features	ensuite bathroom
Appliances	Air Conditioning-Central, Dishwasher-Built-In, Dryer, Microwave Hood Fan, Refrigerator, Stove-Electric, Washer, Window Coverings
Heating	Forced Air-1, Natural Gas
Fireplace	Yes
Fireplaces	Mantel, Tile Surround
Stories	3
Has Basement	Yes
Basement	Full, Finished

### **Exterior**

Exterior	Wood, Brick, Vinyl
Exterior Features	Fenced, Golf Nearby, Landscaped, Playground Nearby, Public Transportation, Schools, Shopping Nearby, See Remarks
Roof	Asphalt Shingles

Construction	Wood, Brick, Vinyl
Foundation	Concrete Perimeter

**Additional Information**

Date Listed	June 20th, 2025
Days on Market	11
Zoning	Zone 24

DATA IS DEEMED RELIABLE BUT IS NOT GUARANTEED ACCURATE BY THE REALTORS® ASSOCIATION OF EDMONTON. COPYRIGHT 2025 BY THE REALTORS® ASSOCIATION OF EDMONTON. ALL RIGHTS RESERVED.Trademarks are owned or controlled by the Canadian Real Estate Association (CREA) and identify real estate professionals who are members of CREA (REALTOR®, REALTORS®) and/or the quality of services they provide (MLS®, Multiple Listing Service®)

Listing information last updated on July 1st, 2025 at 6:02pm MDT