

## \$839,000 - 7248 May Road, Edmonton

MLS® #E4444485

**\$839,000**

4 Bedroom, 4.00 Bathroom, 2,331 sqft

Single Family on 0.00 Acres

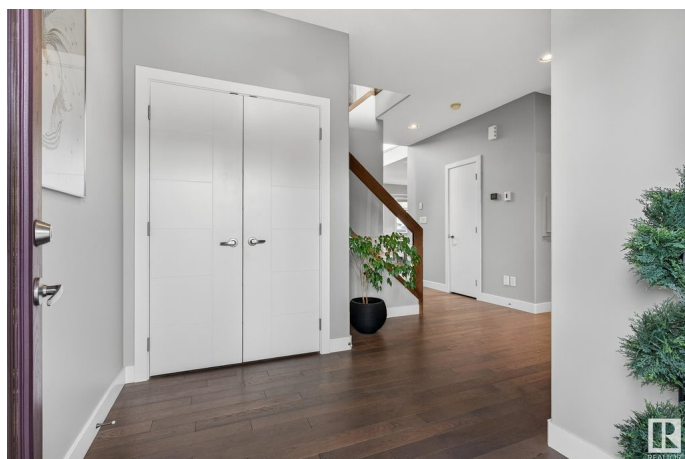
Magrath Heights, Edmonton, AB

**FORMER SHOWHOME ALERT!** This fully loaded **TRIPLE GARAGE** two-storey by Kimberley Homes offers exceptional upgrades and thoughtful design. The open-to-below floorplan, expansive windows, and soaring ceilings fill the space with natural light. Enjoy a chef's kitchen, grand living room with full-height fireplace, king-sized primary suite with spa-like ensuite, walk-in closet, and private den. Upstairs features a spacious bonus room and two bedrooms; the finished basement includes 9' ceilings, a huge rec room, fourth bedroom, full bath, and access to the oversized triple garage. Additional perks: A/C, tankless hot water, central vac, whole-home audio, ethernet, professional landscaping, and direct access to the neighbourhood's beautiful trails and ponds. Close to top schools, shops, Whitemud & Henday. Luxury, comfort, and nature all in one stunning package!

Built in 2015

### Essential Information

MLS® #	E4444485
Price	\$839,000
Bedrooms	4
Bathrooms	4.00
Full Baths	4



Square Footage	2,331
Acres	0.00
Year Built	2015
Type	Single Family
Sub-Type	Half Duplex
Style	2 Storey
Status	Active

### Community Information

Address	7248 May Road
Area	Edmonton
Subdivision	Magrath Heights
City	Edmonton
County	ALBERTA
Province	AB
Postal Code	T6R 0T2

### Amenities

Amenities	See Remarks
Parking	Triple Garage Attached

### Interior

Interior Features	ensuite bathroom
Appliances	Air Conditioning-Central, Dishwasher-Built-In, Dryer, Garage Control, Garage Opener, Refrigerator, Stove-Gas, Washer, Window Coverings
Heating	Forced Air-1, Natural Gas
Stories	3
Has Basement	Yes
Basement	Full, Finished

### Exterior

Exterior	Wood, Stone
Exterior Features	See Remarks
Roof	Asphalt Shingles
Construction	Wood, Stone
Foundation	Concrete Perimeter

### Additional Information

Date Listed	June 26th, 2025
-------------	-----------------

Days on Market	21
Zoning	Zone 14
HOA Fees	225
HOA Fees Freq.	Annually

DATA IS DEEMED RELIABLE BUT IS NOT GUARANTEED ACCURATE BY THE REALTORS® ASSOCIATION OF EDMONTON. COPYRIGHT 2025 BY THE REALTORS® ASSOCIATION OF EDMONTON. ALL RIGHTS RESERVED. Trademarks are owned or controlled by the Canadian Real Estate Association (CREA) and identify real estate professionals who are members of CREA (REALTOR®, REALTORS®) and/or the quality of services they provide (MLS®, Multiple Listing Service®)

Listing information last updated on July 17th, 2025 at 6:32am MDT