

# \$249,000 - 406 10135 Saskatchewan Drive, Edmonton

MLS® #E4445212

**\$249,000**

2 Bedroom, 1.50 Bathroom, 1,084 sqft

Condo / Townhouse on 0.00 Acres

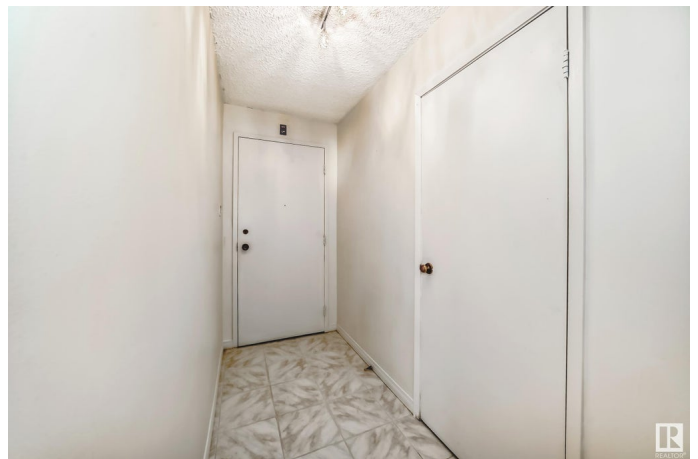
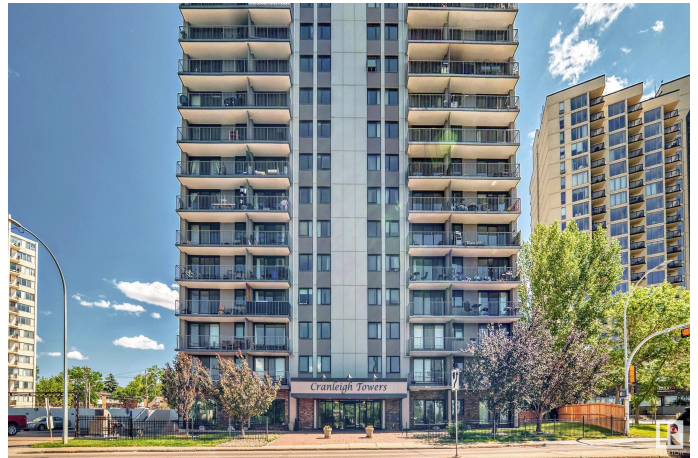
Strathcona, Edmonton, AB

Enjoy stunning river valley and city skyline views from this upgraded 2-bedroom, 2-bath. The open-concept layout perfect for everyday living and entertaining. Step out to a spacious balcony to take in the views. The bright living and dining areas are warm and inviting. The primary bedroom offer a private 2-piece ensuite, while the second bedroom is ideal for guests or a home office. A 4-piece main bath and in-suite laundry add convenience. Includes titled underground parking. Building upgrades include new balcony doors, windows, and fresh exterior paint. Enjoy access to a pool, fitness room, and sauna. Located minutes from the University of Alberta, Whyte Avenue, downtown, and river valley trails—this is the best of city living!

Built in 1973

## Essential Information

|                |           |
|----------------|-----------|
| MLS® #         | E4445212  |
| Price          | \$249,000 |
| Bedrooms       | 2         |
| Bathrooms      | 1.50      |
| Full Baths     | 1         |
| Half Baths     | 1         |
| Square Footage | 1,084     |
| Acres          | 0.00      |



|            |                        |
|------------|------------------------|
| Year Built | 1973                   |
| Type       | Condo / Townhouse      |
| Sub-Type   | Apartment High Rise    |
| Style      | Single Level Apartment |
| Status     | Active                 |

### Community Information

|             |                              |
|-------------|------------------------------|
| Address     | 406 10135 Saskatchewan Drive |
| Area        | Edmonton                     |
| Subdivision | Strathcona                   |
| City        | Edmonton                     |
| County      | ALBERTA                      |
| Province    | AB                           |
| Postal Code | T6E 4Y9                      |

### Amenities

|                |  |
|----------------|--|
| Amenities      | Exercise Room, Parking-Visitor, Pool-Indoor, Secured Parking, Security Door, Tennis Courts |
| Parking Spaces | 1  |
| Parking        | Parkade, Single Indoor, Underground  |
| Has Pool       | Yes  |

### Interior

|                   |   |
|-------------------|---|
| Interior Features | ensuite bathroom  |
| Appliances        | Dishwasher-Built-In, Dryer, Intercom, Refrigerator, Stove-Electric, Washer, Window Coverings, Curtains and Blinds |
| Heating           | Hot Water, Natural Gas  |
| # of Stories      | 20  |
| Stories           | 1   |
| Has Basement      | Yes   |
| Basement          | None, No Basement   |

### Exterior

|                   |   |
|-------------------|---|
| Exterior          | Steel, Concrete   |
| Exterior Features | Corner Lot, Park/Reserve, Private Setting, Public Transportation, Ravine View, Schools, Shopping Nearby |
| Roof              | Tar & Gravel  |
| Construction      | Steel, Concrete   |
| Foundation        | Concrete Perimeter  |

**School Information**

|            |                      |
|------------|----------------------|
| Elementary | King Edward          |
| Middle     | McKernan Junior High |
| High       | Strathcona High      |

**Additional Information**

|                |                |
|----------------|----------------|
| Date Listed    | July 1st, 2025 |
| Days on Market | 56             |
| Zoning         | Zone 15        |
| Condo Fee      | \$778          |

DATA IS DEEMED RELIABLE BUT IS NOT GUARANTEED ACCURATE BY THE REALTORS® ASSOCIATION OF EDMONTON. COPYRIGHT 2025 BY THE REALTORS® ASSOCIATION OF EDMONTON. ALL RIGHTS RESERVED.Trademarks are owned or controlled by the Canadian Real Estate Association (CREA) and identify real estate professionals who are members of CREA (REALTOR®, REALTORS®) and/or the quality of services they provide (MLS®, Multiple Listing Service®)

Listing information last updated on August 26th, 2025 at 8:47pm MDT