

## \$2,700,000 - 10522 134 Street, Edmonton

MLS® #E4447806

**\$2,700,000**

5 Bedroom, 5.50 Bathroom, 3,541 sqft

Single Family on 0.00 Acres

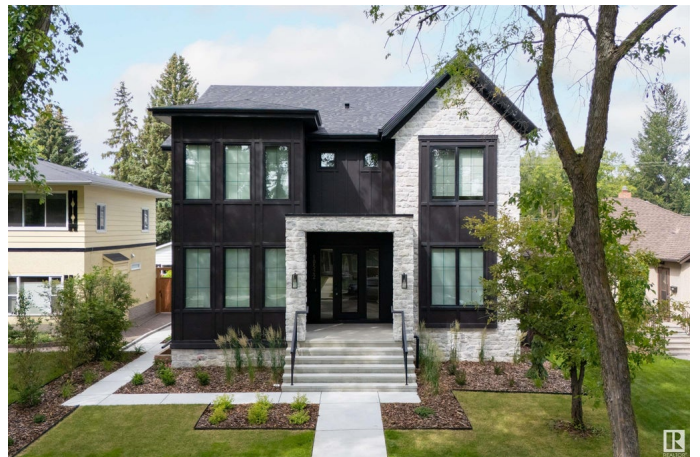
Glenora, Edmonton, AB

Welcome to your dream home with over 5,000 sf of living space in one of Edmonton's best neighborhoods in GLENORA! This brand-new construction is located on a quiet tree lined street. Step inside and be greeted by the 10-foot ceilings creating an airy and expansive atmosphere. Hardwood flooring on all three levels, adding warmth and sophistication. Main floor features an office, formal dining room, kitchen nook and an expansive kitchen with a 12' island. 4 bedrooms on the top floor with 4 ensuites and walk-in closets. Basement features a theatre room, gym, and wet bar. Heated, triple car garage measuring at 892 sf. A/C & fully landscaped yard, west-facing lot makes this home perfect. Downtown at your doorstep, quick access to the river valley and trails. Don't miss your chance to call this exquisite residence your home sweet home.

Built in 2024

### Essential Information

MLS® #	E4447806
Price	\$2,700,000
Bedrooms	5
Bathrooms	5.50
Full Baths	5
Half Baths	1



Square Footage	3,541
Acres	0.00
Year Built	2024
Type	Single Family
Sub-Type	Detached Single Family
Style	2 Storey
Status	Active

### Community Information

Address	10522 134 Street
Area	Edmonton
Subdivision	Glenora
City	Edmonton
County	ALBERTA
Province	AB
Postal Code	T5N 2B5

### Amenities

Amenities	Air Conditioner, Ceiling 10 ft., Closet Organizers, Detectors Smoke, Infill Property, Natural Gas BBQ Hookup
Parking	Triple Garage Detached

### Interior

Interior Features	ensuite bathroom
Appliances	Air Conditioning-Central, Dishwasher-Built-In, Dryer, Oven-Microwave, Refrigerator, Vacuum Systems, Washer, Wine/Beverage Cooler, Oven Built-In-Two, Stove-Induction
Heating	Forced Air-2, Natural Gas
Stories	3
Has Basement	Yes
Basement	Full, Finished

### Exterior

Exterior	Wood, Stone, Hardie Board Siding
Exterior Features	Landscaped, Public Transportation, Schools, Shopping Nearby
Roof	Asphalt Shingles
Construction	Wood, Stone, Hardie Board Siding
Foundation	Concrete Perimeter

### School Information

Elementary	glenora elementary
Middle	Westminister school

### **Additional Information**

Date Listed	July 15th, 2025
-------------	-----------------

Days on Market	2
----------------	---

Zoning	Zone 11
--------	---------

DATA IS DEEMED RELIABLE BUT IS NOT GUARANTEED ACCURATE BY THE REALTORS® ASSOCIATION OF EDMONTON. COPYRIGHT 2025 BY THE REALTORS® ASSOCIATION OF EDMONTON. ALL RIGHTS RESERVED. Trademarks are owned or controlled by the Canadian Real Estate Association (CREA) and identify real estate professionals who are members of CREA (REALTOR®, REALTORS®) and/or the quality of services they provide (MLS®, Multiple Listing Service®)

Listing information last updated on July 17th, 2025 at 3:33pm MDT