

Courtesy Of Ajit Sahoo Of Sterling Real Estate

# \$299,901 - 11331 84 St Street, Edmonton

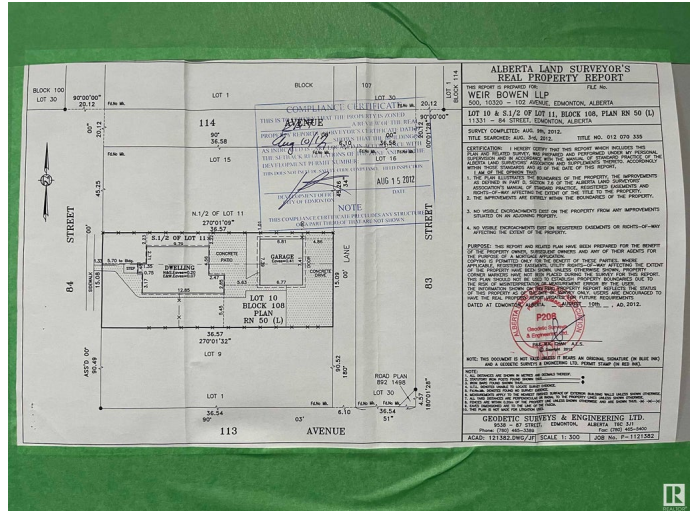
MLS® #E4448367

**\$299,901**

0 Bedroom, 0.00 Bathroom,  
Single Family on 0.00 Acres

Parkdale (Edmonton), Edmonton, AB

Medium Scale Residential (RM h16) Empty Lot available to buy immediately. Permitted use-Backyard Housing, Duplex Housing, Lodging Houses, Multi-unit Housing, Row Housing, Secondary Suites, Semi-detached Housing, Single Detached Housing, and Supportive Housing. You can build a day care, food and drink service, etc. Buyer may be able to build a fourplex or a triplex with legal basement suites at this lot. Excellent location for rental potentials. Close to Stadium LRT station, bus stops, grocery, etc.



## Essential Information

MLS® #	E4448367
Price	\$299,901
Bathrooms	0.00
Acres	0.00
Type	Single Family
Sub-Type	Vacant Lot/Land
Status	Active

## Community Information

Address	11331 84 St Street
Area	Edmonton
Subdivision	Parkdale (Edmonton)
City	Edmonton
County	ALBERTA

Province AB  
Postal Code T5B 3B3

### **Exterior**

Exterior Features Back Lane, Commercial, Flat Site, Level Land, Playground Nearby

### **Additional Information**

Date Listed July 17th, 2025  
Days on Market 102  
Zoning Zone 05

DATA IS DEEMED RELIABLE BUT IS NOT GUARANTEED ACCURATE BY THE REALTORS® ASSOCIATION OF EDMONTON. COPYRIGHT 2025 BY THE REALTORS® ASSOCIATION OF EDMONTON. ALL RIGHTS RESERVED. Trademarks are owned or controlled by the Canadian Real Estate Association (CREA) and identify real estate professionals who are members of CREA (REALTOR®, REALTORS®) and/or the quality of services they provide (MLS®, Multiple Listing Service®)

Listing information last updated on October 27th, 2025 at 8:47pm MDT