

Courtesy Of Amber Love Of Century 21 Masters

# \$519,900 - 32 Butterfield Crescent, St. Albert

MLS® #E4451250

**\$519,900**

6 Bedroom, 3.00 Bathroom, 1,746 sqft

Single Family on 0.00 Acres

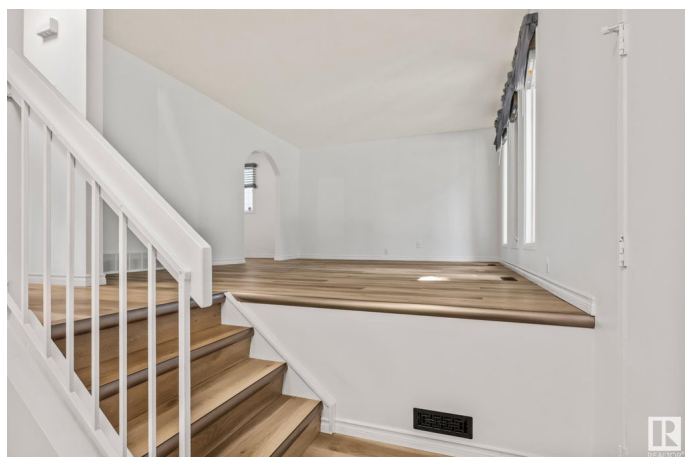
Braeside, St. Albert, AB

Need more space and a prime location? This sweet home on picturesque Butterfield Crescent checks all the boxes! With SIX bedrooms, multiple living areas across different levels, and a cozy vibe throughout, there's room for everyone to live, work, GROW and play. Picture yourself sipping coffee on the sunny front porch, hosting in the bright kitchen, or gathering in the separate dining room. The exposed aggregate driveway and patio lead to a double detached oversized garage—hello, extra storage! You're just steps from the river valley, with a park around the corner and easy access to Woodlands spray park, skate park, Shops of Boudreau, and St. Albert Centre. Recent updates include vinyl plank flooring (2025), fresh paint & baseboards (2025), dishwasher (2025), and shingles & eaves (2023). Start to finish, this one's sweet.

Built in 1977

## Essential Information

MLS® #	E4451250
Price	\$519,900
Bedrooms	6
Bathrooms	3.00
Full Baths	2
Half Baths	2



Square Footage	1,746
Acres	0.00
Year Built	1977
Type	Single Family
Sub-Type	Detached Single Family
Style	4 Level Split
Status	Active

### **Community Information**

Address	32 Butterfield Crescent
Area	St. Albert
Subdivision	Braeside
City	St. Albert
County	ALBERTA
Province	AB
Postal Code	T8N 2W7

### **Amenities**

Amenities	Fire Pit, Front Porch, Parking-Extra
Parking Spaces	5
Parking	Double Garage Detached, Over Sized

### **Interior**

Interior Features	ensuite bathroom
Appliances	Dishwasher-Built-In, Dryer, Garage Control, Garage Opener, Hood Fan, Refrigerator, Stove-Electric, Washer, See Remarks, Curtains and Blinds
Heating	Forced Air-1, Natural Gas
Fireplace	Yes
Fireplaces	Brick Facing, Mantel
Stories	4
Has Basement	Yes
Basement	See Remarks, Finished

### **Exterior**

Exterior	Wood, Metal
Exterior Features	Backs Onto Park/Trees, Fenced, Flat Site, Landscaped, Low Maintenance Landscape, Playground Nearby, Public Transportation, Schools, Shopping Nearby
Roof	Asphalt Shingles

Construction	Wood, Metal
Foundation	Concrete Perimeter

### **School Information**

Elementary	NeilMRoss,EcoleSacreCoeur
Middle	EcoleMarguerite d'Youville
High	PaulKane,ESMY

### **Additional Information**

Date Listed	August 5th, 2025
Days on Market	30
Zoning	Zone 24

DATA IS DEEMED RELIABLE BUT IS NOT GUARANTEED ACCURATE BY THE REALTORS® ASSOCIATION OF EDMONTON. COPYRIGHT 2025 BY THE REALTORS® ASSOCIATION OF EDMONTON. ALL RIGHTS RESERVED. Trademarks are owned or controlled by the Canadian Real Estate Association (CREA) and identify real estate professionals who are members of CREA (REALTOR®, REALTORS®) and/or the quality of services they provide (MLS®, Multiple Listing Service®)

Listing information last updated on September 4th, 2025 at 1:02pm MDT