

\$419,900 - 1746 Keene Crescent, Edmonton

MLS® #E4455744

\$419,900

2 Bedroom, 2.50 Bathroom, 1,547 sqft

Single Family on 0.00 Acres

Keswick, Edmonton, AB

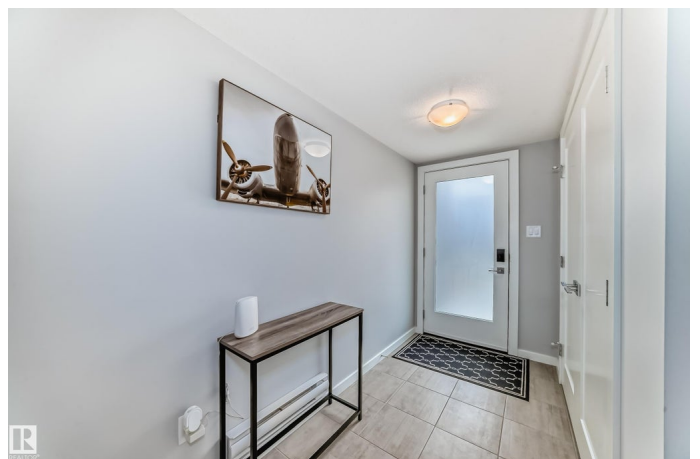
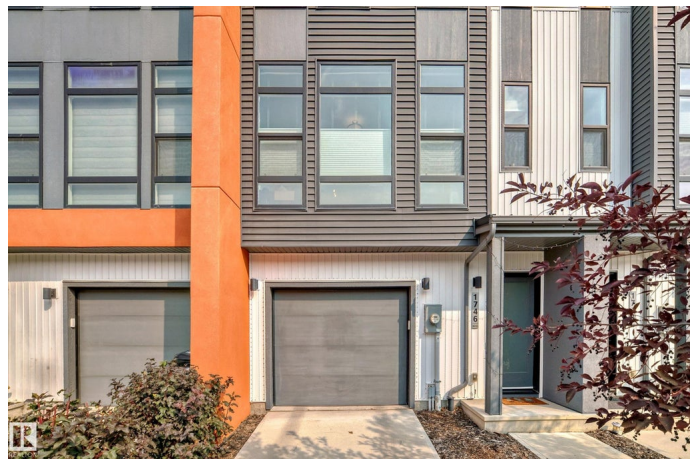
Beautiful 2 BEDS, 2.5 BATH, 2 CAR ATTACHED (TANDEM) Townhome Built by award winning AVERTON HOMES. Welcome to One at Keswick! This 1547 sqft unit w/NO CONDO FEES, shows like new. The main floor is very modern & open floor plan. Oversized windows allows an amazing amount of light into the home! The kitchen has bright white cabinets, a beautiful back splash, quartz counters, stainless steel appliances and plenty of room to entertain in style. Just off the kitchen there is a large dining area that opens up to the spacious deck w/gas line for BBQ overlooking landscaped & fenced backyard. On the other side of the central kitchen you will find the perfect living room to unwind. Main features include a large living area, great dining space, stunning floor to ceiling windows, & stunning glass feature w/open raiser staircase. Upstairs is a primary suite w/3-pc ensuite, 2nd bedroom 4-pc bath and a laundry. Located close to shopping, schools, transportation, trails & MORE Great value in this home is hard to beat !

Built in 2019

Essential Information

MLS® # E4455744

Price \$419,900



Bedrooms	2
Bathrooms	2.50
Full Baths	2
Half Baths	1
Square Footage	1,547
Acres	0.00
Year Built	2019
Type	Single Family
Sub-Type	Residential Attached
Style	2 Storey
Status	Active

Community Information

Address	1746 Keene Crescent
Area	Edmonton
Subdivision	Keswick
City	Edmonton
County	ALBERTA
Province	AB
Postal Code	T6W 3W2

Amenities

Amenities	Ceiling 9 ft., No Animal Home, No Smoking Home, Walkout Basement
Parking	Double Garage Attached, Tandem

Interior

Interior Features	ensuite bathroom
Appliances	Dishwasher-Built-In, Dryer, Garage Opener, Microwave Hood Fan, Refrigerator, Stove-Electric, Washer, Window Coverings
Heating	Forced Air-1, Natural Gas
Stories	2
Has Basement	Yes
Basement	None, No Basement

Exterior

Exterior	Wood, Hardie Board Siding, Stucco
Exterior Features	Airport Nearby, Golf Nearby, Landscaped, Public Transportation, Schools, Shopping Nearby
Roof	Asphalt Shingles

Construction	Wood, Hardie Board Siding, Stucco
Foundation	Concrete Perimeter

Additional Information

Date Listed	September 3rd, 2025
Days on Market	2
Zoning	Zone 56

DATA IS DEEMED RELIABLE BUT IS NOT GUARANTEED ACCURATE BY THE REALTORS® ASSOCIATION OF EDMONTON. COPYRIGHT 2025 BY THE REALTORS® ASSOCIATION OF EDMONTON. ALL RIGHTS RESERVED.Trademarks are owned or controlled by the Canadian Real Estate Association (CREA) and identify real estate professionals who are members of CREA (REALTOR®, REALTORS®) and/or the quality of services they provide (MLS®, Multiple Listing Service®)

Listing information last updated on September 5th, 2025 at 1:17pm MDT