

# \$699,900 - 13910 101a Avenue, Edmonton

MLS® #E4462846

## \$699,900

4 Bedroom, 2.00 Bathroom, 1,436 sqft  
Single Family on 0.00 Acres

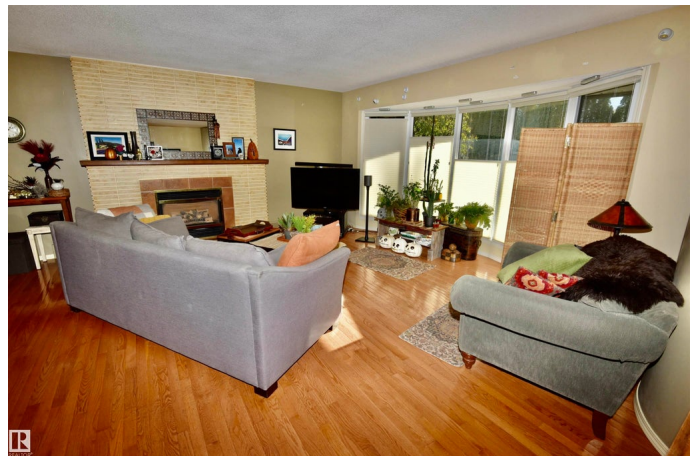
Glenora, Edmonton, AB

Quietly nestled amongst mature trees in family friendly Old Glenora. Located close to river valley and nature's trail system. Upgraded 1435 sqft bungalow. Bright natural light through large windows and an airy floor plan. Hardwood floors, gas fireplace, newer windows, new HWT, new eaves troughing, Kitchen with gas stove, oak cabinets and vinyl plank flooring. Oversized primary bedroom. Main floor bathroom with upgraded walk-in shower. Large recreation room on sub-floor in basement. Outdoor entertaining on the tiered backyard deck in private setting. Rear access double garage off paved alley. A short walk to highly respected Glenora Elementary School. Near future LRT station. Just minutes to downtown.

Built in 1951

### Essential Information

MLS® #	E4462846
Price	\$699,900
Bedrooms	4
Bathrooms	2.00
Full Baths	2
Square Footage	1,436
Acres	0.00
Year Built	1951



Type	Single Family
Sub-Type	Detached Single Family
Style	Bungalow
Status	Active

### **Community Information**

Address	13910 101a Avenue
Area	Edmonton
Subdivision	Glenora
City	Edmonton
County	ALBERTA
Province	AB
Postal Code	T5N 0L2

### **Amenities**

Amenities	Deck
Parking Spaces	4
Parking	Double Garage Detached

### **Interior**

Appliances	Alarm/Security System, Dishwasher-Built-In, Refrigerator, Stove-Gas, Washer, Window Coverings, Dryer-Two
Heating	Forced Air-1, Natural Gas
Fireplace	Yes
Fireplaces	Brick Facing
Stories	2
Has Basement	Yes
Basement	Full, Finished

### **Exterior**

Exterior	Wood, Brick, Vinyl
Exterior Features	Fenced, Landscaped, Paved Lane, Public Transportation, Schools, Shopping Nearby, Treed Lot
Roof	Asphalt Shingles
Construction	Wood, Brick, Vinyl
Foundation	Concrete Perimeter

### **School Information**

Elementary	GLENORA
------------	---------

Middle

WESTMINSTER

**Additional Information**

Date Listed            October 17th, 2025

Days on Market      6

Zoning                Zone 11

DATA IS DEEMED RELIABLE BUT IS NOT GUARANTEED ACCURATE BY THE REALTORS® ASSOCIATION OF EDMONTON. COPYRIGHT 2025 BY THE REALTORS® ASSOCIATION OF EDMONTON. ALL RIGHTS RESERVED. Trademarks are owned or controlled by the Canadian Real Estate Association (CREA) and identify real estate professionals who are members of CREA (REALTOR®, REALTORS®) and/or the quality of services they provide (MLS®, Multiple Listing Service®)

Listing information last updated on October 23rd, 2025 at 1:17pm MDT