

Courtesy Of Denis L Lamothe Of Century 21 Leading

\$290,000 - 11905 70 Street, Edmonton

MLS® #E4463624

\$290,000

3 Bedroom, 2.00 Bathroom, 746 sqft

Single Family on 0.00 Acres

Montrose (Edmonton), Edmonton, AB

Great location, 2 bedrooms upstairs and a one-bedroom downstairs. This is a solid bungalow with new windows installed in 2025. Located in Montrose close to main freeways. The basement has a second kitchen and does have separate entrance. A great starter home with good potential.

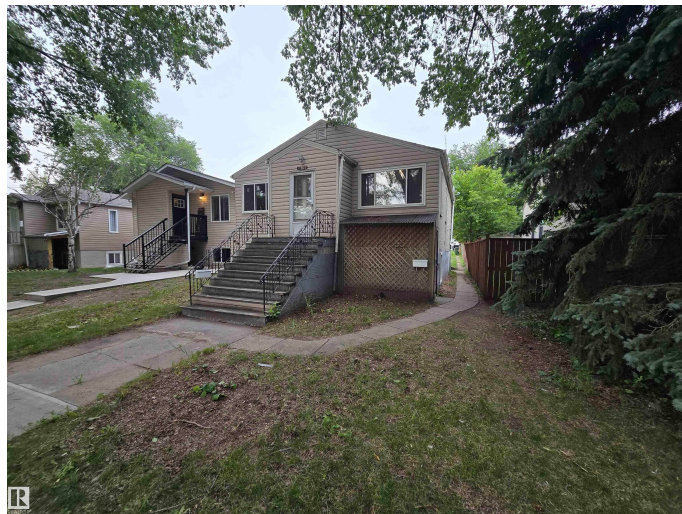
Built in 1950

Essential Information

| | |
|----------------|------------------------|
| MLS® # | E4463624 |
| Price | \$290,000 |
| Bedrooms | 3 |
| Bathrooms | 2.00 |
| Full Baths | 2 |
| Square Footage | 746 |
| Acres | 0.00 |
| Year Built | 1950 |
| Type | Single Family |
| Sub-Type | Detached Single Family |
| Style | Bungalow |
| Status | Active |

Community Information

| | |
|-------------|---------------------|
| Address | 11905 70 Street |
| Area | Edmonton |
| Subdivision | Montrose (Edmonton) |



| | |
|-------------|----------|
| City | Edmonton |
| County | ALBERTA |
| Province | AB |
| Postal Code | T5B 1V1 |

Amenities

| | |
|-----------|---------------------------|
| Amenities | Carbon Monoxide Detectors |
| Parking | 2 Outdoor Stalls |

Interior

| | |
|--------------|--|
| Appliances | Hood Fan, Stove-Gas, Dryer-Two, Refrigerators-Two, Stoves-Two, Washers-Two |
| Heating | Forced Air-1, Natural Gas |
| Stories | 2 |
| Has Basement | Yes |
| Basement | Full, Finished |

Exterior

| | |
|-------------------|---|
| Exterior | Wood, Stucco, Vinyl |
| Exterior Features | Back Lane, Not Fenced, Park/Reserve, Playground Nearby, Public Transportation |
| Roof | Asphalt Shingles |
| Construction | Wood, Stucco, Vinyl |
| Foundation | Concrete Perimeter |

Additional Information

| | |
|----------------|--------------------|
| Date Listed | October 27th, 2025 |
| Days on Market | 8 |
| Zoning | Zone 06 |

DATA IS DEEMED RELIABLE BUT IS NOT GUARANTEED ACCURATE BY THE REALTORS® ASSOCIATION OF EDMONTON. COPYRIGHT 2025 BY THE REALTORS® ASSOCIATION OF EDMONTON. ALL RIGHTS RESERVED. Trademarks are owned or controlled by the Canadian Real Estate Association (CREA) and identify real estate professionals who are members of CREA (REALTOR®, REALTORS®) and/or the quality of services they provide (MLS®, Multiple Listing Service®)

Listing information last updated on November 4th, 2025 at 5:02am MST